



Camtraptions PIR v4 Manual (*extract*)



Reference

The Reference section compiles technical data, timing charts, and specifications. It serves as a quick lookup guide for signal sequences, variable definitions, and voltage tables — useful for troubleshooting and advanced configuration work.

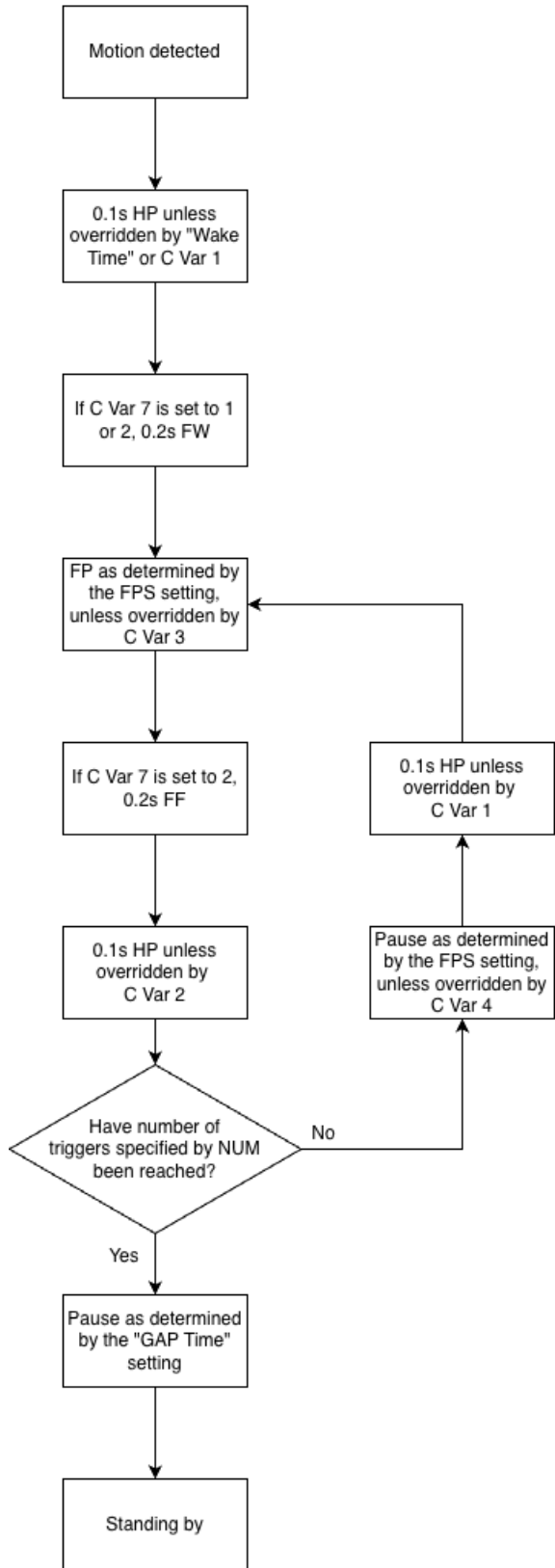
- [Stills Sequence Timings](#)
- [Video Sequence Timings](#)
- [Battery Voltage Tables](#)
- [Specifications](#)

Stills Sequence Timings

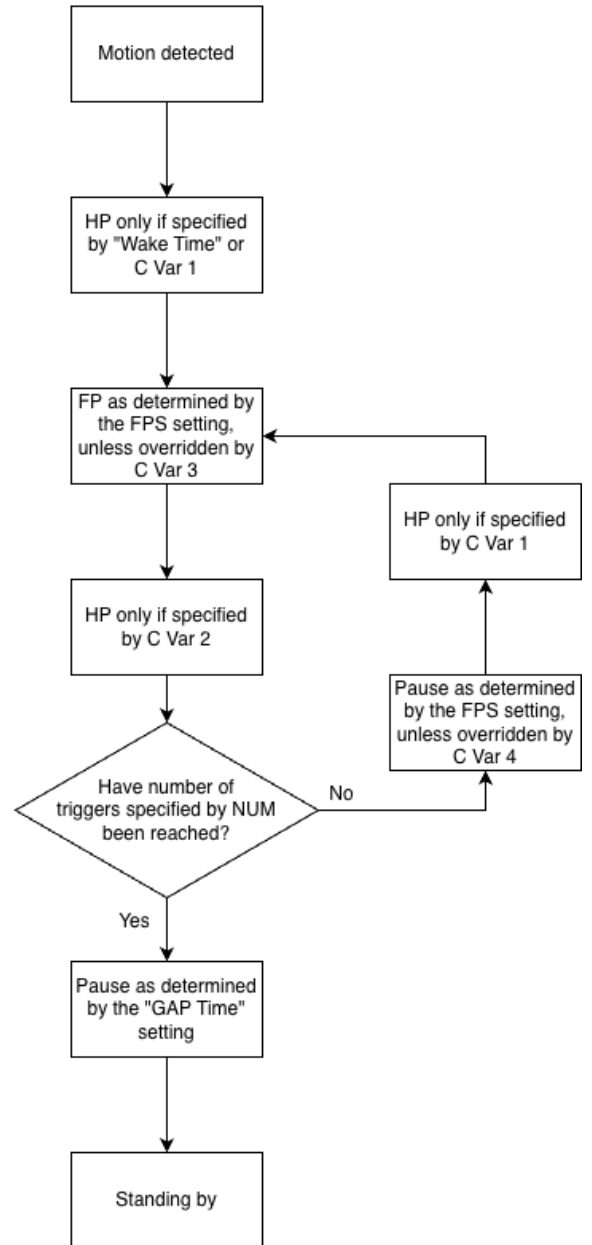
These flowcharts outline the sequence of operations when the sensor is set to **Still Mode**, for both Wireless and Wired outputs, including all optional timing adjustments via menu settings and **Custom Variables (C Vars)**.

Still Mode

Wireless



Wired



Signal Key

Abbreviation	Meaning	Description
HP	Half-Press	A half-press signal sent to the camera to wake it, initiate autofocus, or prepare flashes before a capture.
FP	Full-Press	A full-press signal that triggers the camera's shutter release or starts/stops video recording.
FW	Flash Wake	A signal sent to compatible wireless flash units to wake them from sleep before firing.
FF	Flash Fire	A signal sent to trigger compatible flashes at the moment of exposure.

Notes – Still Mode

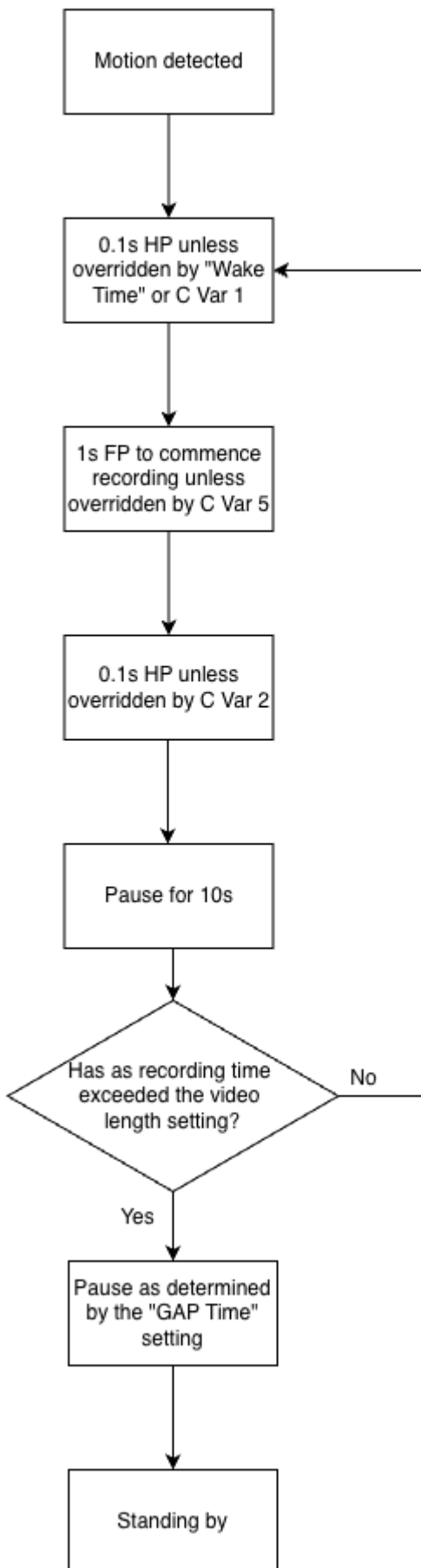
- **Flash Control (C Var 7 / 8):** Enables the sensor to wake or fire flashes independently of the camera (useful for systems like Sony that lack flash-wake signals).
- **Time Windows:** Sequence only operates within defined On Time periods; outside these times, motion is ignored.

Video Sequence Timings

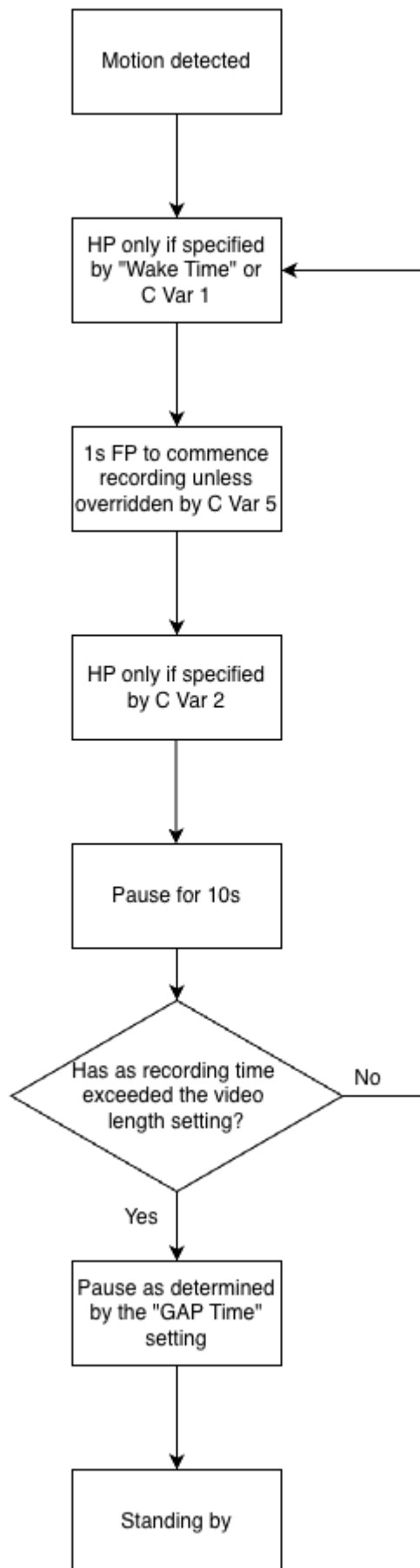
These flowcharts outline the sequence of operations when the sensor is set to **Video Mode**, for both Wireless and Wired outputs, including all optional timing adjustments via menu settings and **Custom Variables (C Vars)**.

Mode 1

Wireless Mode 1

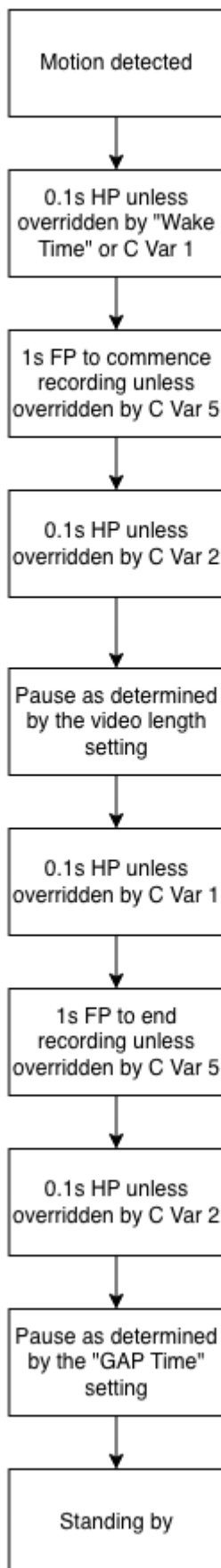


Wired Mode 1

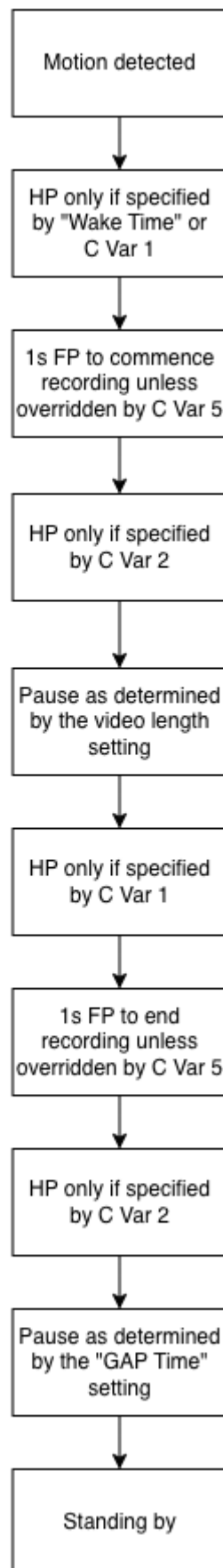


Mode 2

Wireless Mode 2



Wired Mode 2

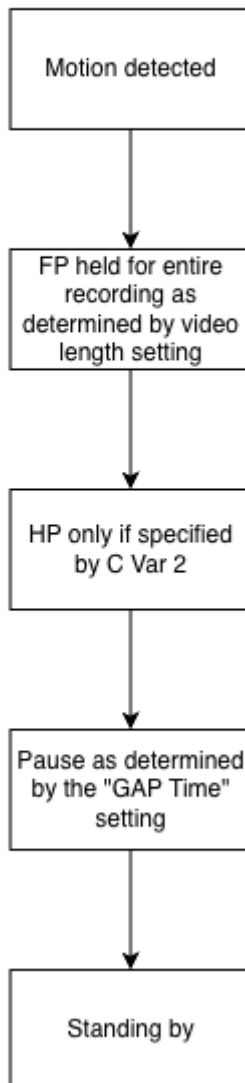


Mode H

Wireless Mode H

Same as Wireless Mode 1

Wired Mode H



Signal Key

Abbreviation	Meaning	Description
HP	Half-Press	A half-press signal sent to the camera to wake it or initiate autofocus.
FP	Full-Press	A full-press signal that triggers the camera's shutter release or starts/stops video recording.

Notes – Video Mode

- **EXT Mode:** Extends recording if motion continues; use C Var 6 to impose a maximum video length limit.
- **Time Windows:** Sequence only operates within defined On Time periods; outside these times, motion is ignored.

Battery Voltage Tables

1. NP-F-Type Lithium-Ion Battery

(Nominal voltage: 7.4 V)

Voltage (V)	Approx. Remaining Capacity
8.4 V	100 % (Fully charged)
8.2 V	90 %
8.0 V	80 %
7.8 V	70 %
7.6 V	60 %
7.4 V	50 %
7.2 V	40 %
7.0 V	30 %
6.8 V	20 %
6.6 V	10 %
≤ 6.4 V	Battery nearly depleted — recharge recommended

2. Six AA Alkaline Batteries

(Nominal combined voltage: 9.0 V)

Voltage (V)	Approx. Remaining Capacity
9.3 V	100 % (Fresh batteries)
9.0 V	90 %
8.7 V	80 %
8.4 V	70 %
8.1 V	60 %
7.8 V	50 %
7.5 V	40 %
7.2 V	30 %
6.9 V	20 %
6.6 V	10 %

Voltage (V)	Approx. Remaining Capacity
≤ 6.3 V	Batteries depleted — replace soon

3. Six AA Ni-MH Rechargeable Batteries

(Nominal combined voltage: 7.2 V)

Voltage (V)	Approx. Remaining Capacity
8.4 V	100 % (Fully charged)
8.2 V	90 %
8.0 V	80 %
7.8 V	70 %
7.6 V	60 %
7.4 V	50 %
7.2 V	40 %
7.0 V	30 %
6.8 V	20 %
6.6 V	10 %
≤ 6.4 V	Recharge required

Specifications

- Detection Type: Dual PIR (Far and Wide sensors)
- Field of View: Far $\approx 10^\circ$ horizontal & vertical | Wide $\approx 60^\circ$ horizontal, 4.5° upward, 13.5° downward
- Power: NP-F lithium-ion battery (up to 60mm in height), 6 \times AA (with adapter), or 4-12V DC input
- Trigger Output: Wired 2.5 mm jack / Wireless transmitter
- Firmware Updates: microSD card
- Dimensions: 14.8 \times 11.7 \times 6.7 cm (approx.)
- Weight (excluding battery): 405g
- Mounting: Dual $\frac{1}{4}$ "-20 tripod threads (compatible with Jungle Mounts)
- Weather Resistance: Sealed construction with silica cavity (IP66)

The information in this manual corresponds to firmware version 1.19 of the Camtraptions PIR Sensor v4.

This manual extract applies to firmware version 1.19.

Exported from docs.camtraptions.com.