



Camtraptions PIR v4 Manual (*extract*)



Firmware Update

The Camtraptions PIR Sensor v4 supports **firmware updates** via microSD card. This allows new features, improvements, and bug fixes to be installed easily by the user without returning the sensor for servicing.

This manual applies to firmware version 1.19. Check the sensor's current firmware version by navigating to the **Home Screen** and holding down the **right arrow** button for 2 seconds. If necessary, you can update the firmware by following the instructions below.

Downloading Firmware

The latest firmware releases can be downloaded from the **Camtraptions website**:

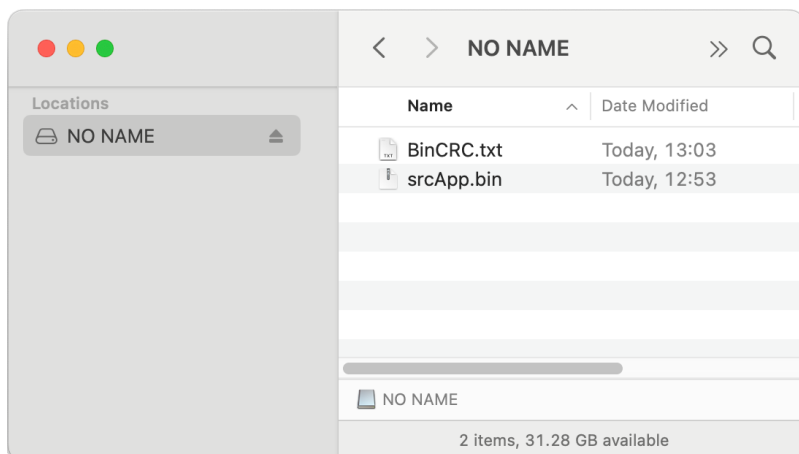
camtraptions.com/resources/pir-v4/

Each firmware version will include a short description of changes.

Preparing the microSD Card

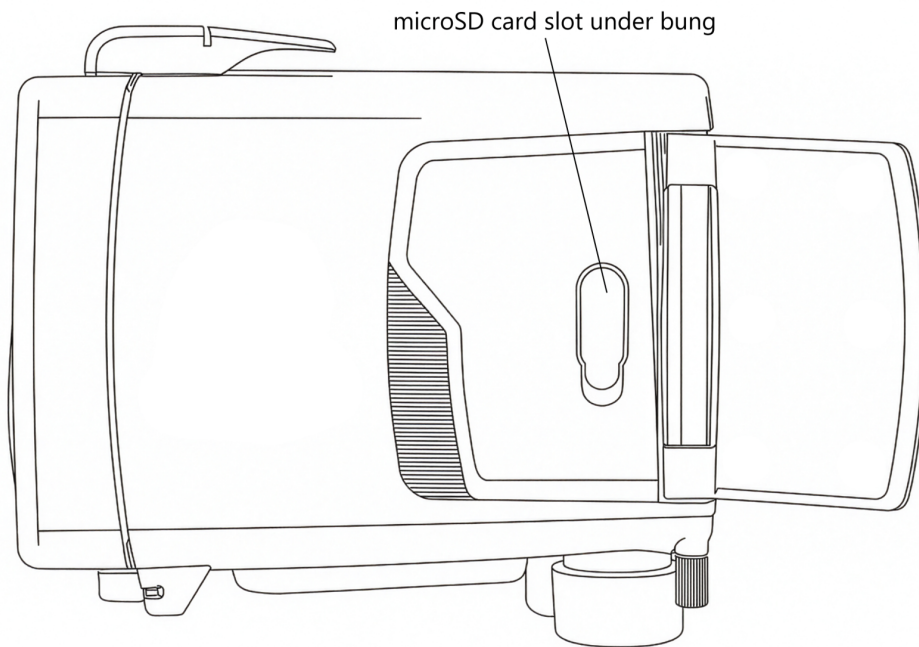
To perform a firmware update, you will need a **microSD memory card** (*not supplied*).

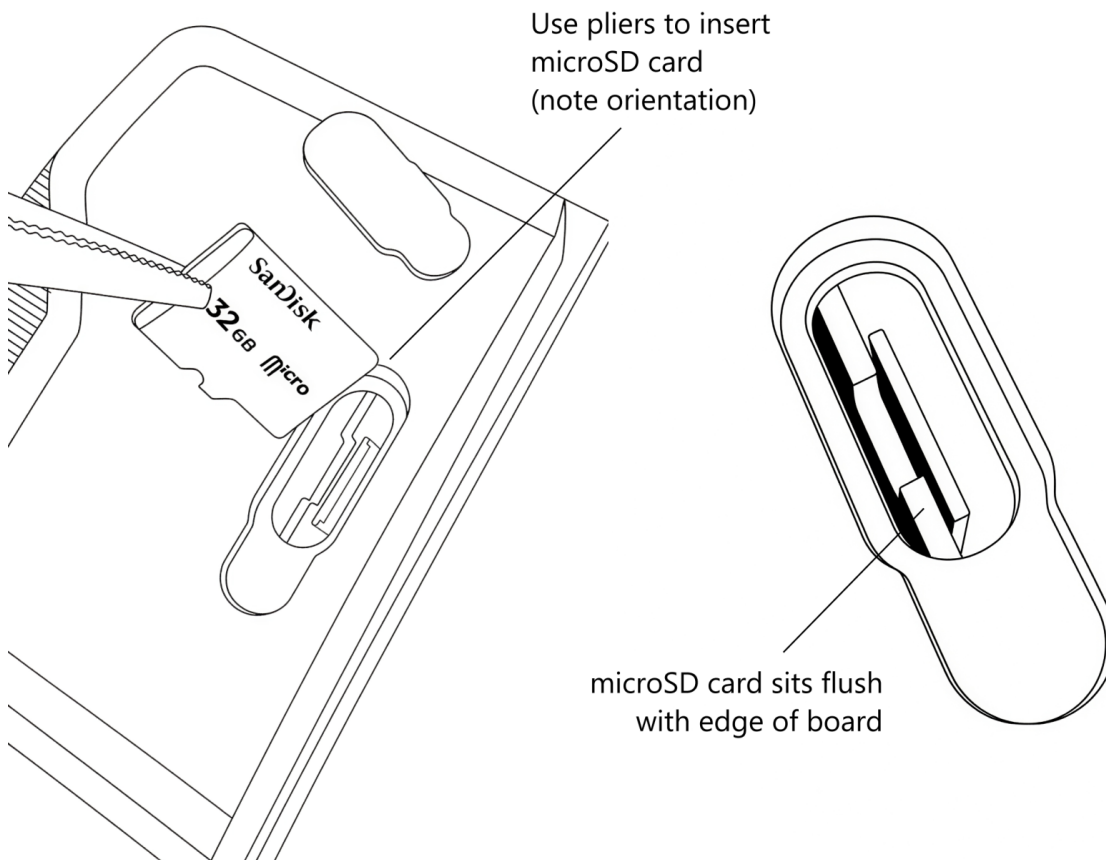
- The card must be **formatted in FAT32** and **no more than 32 GB in total capacity**.
- Copy the two downloaded firmware files directly into the **root directory** of the card — do not place them inside a folder or rename it.



Inserting the microSD card

You may find it helpful to use a pair of thin-nose pliers to insert the SD card into the sensor. The card slot is located beneath the right-hand flap on the side of the sensor. Remove the bung and insert the SD card so that the edge of the card is flush with the edge of the board.





It is possible to accidentally drop the microSD card into the sensor. If this happens then just turn it over and shake it until the card falls out again.

Installing the Firmware

1. Ensure a **fully charged battery** is installed in the sensor.
2. Insert the prepared **microSD card** into the **card slot** beneath the right-hand flap.
3. **Hold the Down button** while switching the sensor **on** to begin the update process.
4. The screen will not display anything but the **red** indicator light on the front of the sensor will turn on and shine **constantly** to indicate that the update is underway.
5. Wait approximately **30 seconds** while the firmware updates.
6. When complete, the **front LED** will blink briefly to confirm the update has finished successfully. The sensor's LCD screen will automatically turn on.
7. You can now remove the microSD card carefully using thin-nose pliers and re-insert the rubber card slot bung, making sure it is fully seated.

Do **not** remove the battery or power during the update process, as this could interrupt installation and corrupt the firmware.

If the microSD card is not inserted correctly (or not inserted at all) and the update procedure is commenced using the sensor's keypad, then the red LED will **flash** rapidly to indicate an **error**.

To resolve this, remove the battery from the sensor to turn it off, then make sure the microSD is **correctly inserted** before re-attempting the firmware update procedure.

Verifying the Update

To confirm the update was successful:

1. From the **Home Screen**, **hold the Right button** to display the new firmware version.
2. Check that the displayed version matches the firmware file you installed.

If the version number does not match or the sensor does not boot normally, repeat the update process using a freshly formatted microSD card.

This manual extract applies to firmware version 1.19.

Exported from docs.camtraptions.com.