



Camtraptions PIR v4 Manual (*extract*)

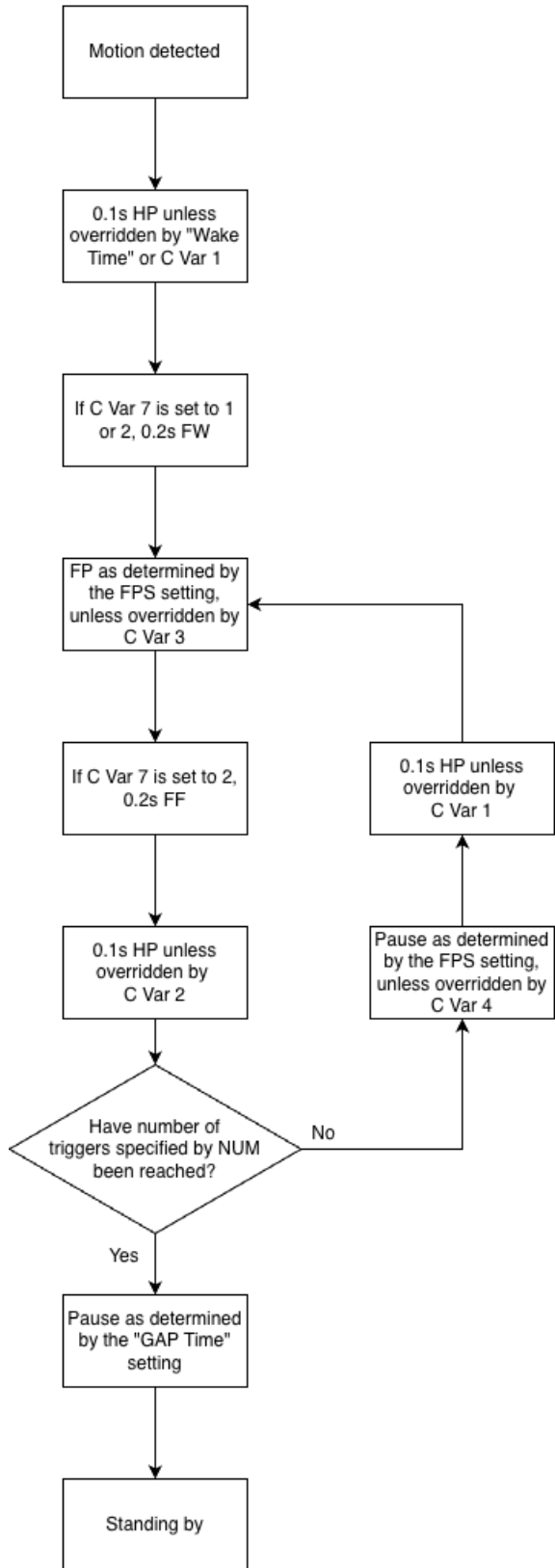


Stills Sequence Timings

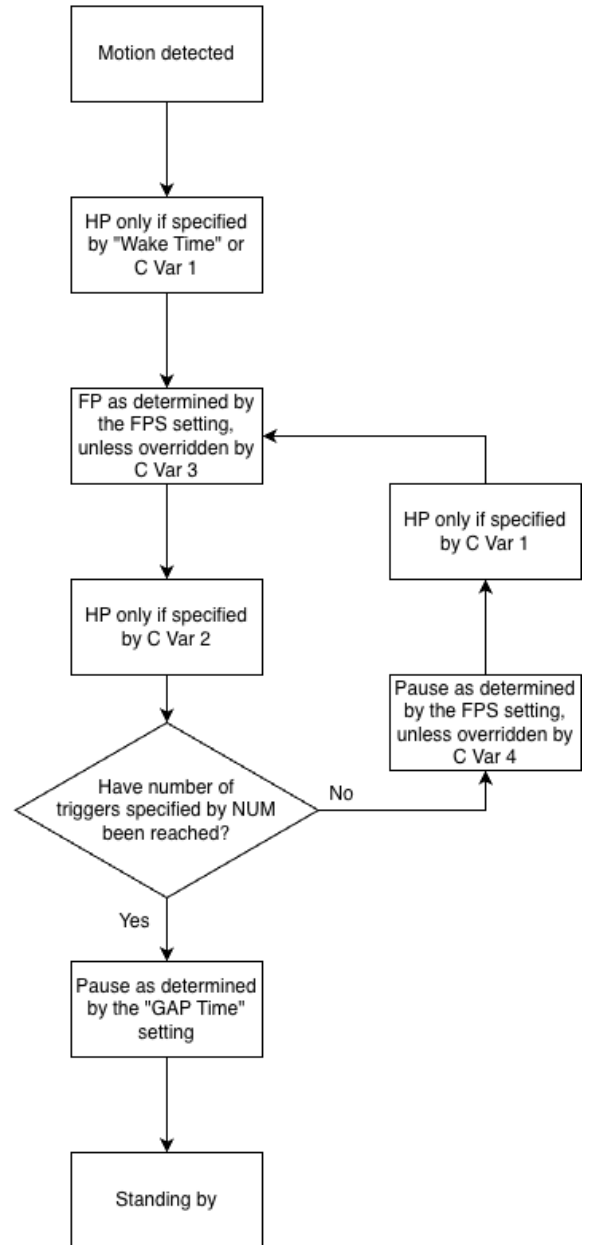
These flowcharts outline the sequence of operations when the sensor is set to **Still Mode**, for both Wireless and Wired outputs, including all optional timing adjustments via menu settings and **Custom Variables (C Vars)**.

Still Mode

Wireless



Wired



Signal Key

Abbreviation	Meaning	Description
HP	Half-Press	A half-press signal sent to the camera to wake it, initiate autofocus, or prepare flashes before a capture.
FP	Full-Press	A full-press signal that triggers the camera's shutter release or starts/stops video recording.
FW	Flash Wake	A signal sent to compatible wireless flash units to wake them from sleep before firing.
FF	Flash Fire	A signal sent to trigger compatible flashes at the moment of exposure.

Notes – Still Mode

- **Flash Control (C Var 7 / 8):** Enables the sensor to wake or fire flashes independently of the camera (useful for systems like Sony that lack flash-wake signals).
- **Time Windows:** Sequence only operates within defined On Time periods; outside these times, motion is ignored.

This manual extract applies to firmware version 1.19.

Exported from docs.camtraptions.com.